

Entry/ECO

Standard/STD

Professional/PRO

ODM & OEM

Intelligent/INT

**PRO**  
Specifications



LED Ceiling Light  
A1099 Series





## Introduction

A1099 ceiling light is a big size with up & down lighting design. It's adopted high lumen SMD LED light source, larger lighting area and low glare design make a softer and uniform light output. AL6063 aluminum housing provides an excellent thermal management. Size options: 400mm, 600mm, 800mm, 1000mm. It can do CCT adjustable and wattage adjustable, multiple installation ways available which meets more application demands.

## Features

- High lumen efficiency 110lm/W.
- Interchangeable CCT (3000+4000+5700K/3000+4000K) with slide switch.
- Interchangeable wattage available for all size.
- DALI dimmable available.
- Osram flicker free driver.
- Multiple installation ways: Recessed/Surface mounted/Pendant(With pendant rod suspension, with steel wire suspension, with wire harness suspension. )

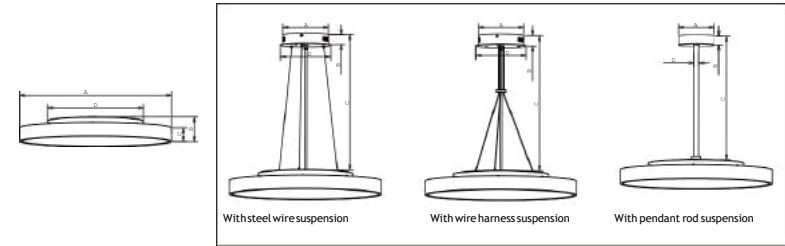
## Application Areas

It is designed for general lighting applications in office, supermarket, shop, school, hotel, etc.





Suspension accessories (Purchase as needed)



## Technical Data Sheet

Code No.	A1099-16-40W	A1099-24-60W		
Dimension(mm)	Ø400*86	Ø600*86		
Cutout (mm)	Ø220-250	Ø385-415		
Watt(W)	40W @max (optional:35W / 37W / 38W / 40W)	60W @max (optional:40W / 45W / 55W / 60W)		
Rated Input Voltage(V)	220-240V			
Input Voltage(V)	198-264V			
LED Module Input	-			
Light Source	SMD			
SDCM	<6 (@3000K 4000K 5000K)			
CCT(K)	1-CCT: 3000K/4000K/5000K/5700K    3-CCT: 3000K + 4000K + 5700K			
CCT Selection DIP Switch	YES			
Luminous Flux (lm) ±5%	Non-DIM	1-CCT	@35W 3300-3900	@40W 3700-4480
			@40W 3600-4200	@60W 5700-6660
	DIM	3-CCT	@40W 3800-4300	@60W 5700-6660
			@35W 3300-3900	@40W 3700-4490
			@40W 3600-4200	@60W 5700-6660
			@40W 3800-4300	@60W 5700-6660
CRI	≥80			
Beam Angle (°)	120°			
UGR	-			
LED Driver	Built-in			
Dimming Option	DALI			
Sensor	NO			
Emergency Kits	NO			
Electrical Class	Class I			
Ingress Protection (IP Rating)	IP40			
Impact Resistance (IK Rating)	-			
Product Finishing(Base)	White RAL 9016/Black RAL 9005			
Materials of Optics	PS			
Materials of Housing	Aluminum			
Lifetime (hr)	50,000h			
Glow wire test (°C)	650°C			
Operating Temp. (°C)	-20°C -45°C			
Storage Temp. (°C)	-20°C -65°C			
Installation	Surface mount / Pendant / Recessed			

## Measurement

Code	Dimension(mm)				Size(mm)	Product Weight (Kg)		Package weight (Kg)		Carton Size(cm)	Qty/CTN	20GP (pcs)	40HQ (pcs)
	A	B	C	D		N.W/PC	G.W/PC	N.W/CTN	G.W/CTN				
A1099-16-40W	400	86	55	219	Ø400*86	3.2	3.8	19.2	25	64.5*46.5*47.5	6PCS	1032	2208
A1099-24-60W	600	86	55	383	Ø600*86	6.9	7.93	13.8	18	68.5*23.5*68.5	2PCS	528	1206
steel wire suspension	180	41	800	200	Ø200*41	0.86	0.9	5.16	6.4	26.5*23*23	4PCS	7488	18700
wire harness suspension	180	41	800	200	Ø200*41	0.86	0.9	5.16	6.4	26.5*23*23	4PCS	7488	18700
pendant rod suspension	140	35	500	10	Ø140*35	0.78	0.9	4.68	6.4	55.5*41.5*44.5	18PCS	4860	11664

## Driver Datasheet (Non-dimmable)

Total load wattage		40W	60W
Output	Output Voltage range	DC30-42V	
	Rated output current	900mA@max(optional:800mA / 850mA / 875mA / 900mA)	
	Line Regulation	±7.5%	±5%
	Setup, Rise Time	-	
	Flickering Index	<3% NO Risk IEC61010-1	<5% NO Risk IEC61010-1
Input	Input Voltage	198-264V	
	Rated Input Voltage(V)	220-240V	
	Frequency	50/60Hz	
	Input Current	0.184A	0.36A
	Rated Input Current	0.184A	0.36A
	Power Factor	0.95	0.98
	THD	<10% @230V	
	Efficiency	90%	92%
Protection	No load wattage	<0.5W	
	Short circuit protection	Pass	
	Over voltage protection	Pass	
Safety & EMC	Over temperature protection	Pass	
	Withstand voltage	I/P-O/P:3.75KVAc,<5mA 60S	I/P-FG 1.6KV <5mA 60S
	Isolation Resistance	I/P-O/P: 500VDC, ≥100M Ω	
	Inrush Current	IEC/EN61000-4-5 (P≥25w L-N:1KV, L/N-PE:2KV)	IEC/EN61000-4-5 (P≥25w L-N:1KV, L/N-PE:2KV)
	EMC Emission	EN55015, EN61000-3-2	
EMC Immunity	EN61000-4-2,3,4,5,6,8,11; EN61547		

# Driver Datasheet (DALI Dimmable )

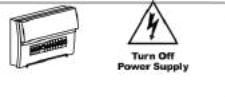
Total load wattage		40W	60W
Output	Output Voltage range	DC15-54V	DC54-240V
	Rated output current	900mA	500mA
	Line Regulation	±3%	
	Setup, Rise Time	-	
	Flickering Index	<2% NO Risk IEEE1789 NO RISK	<1% IEEE1789 NO RISK
Input	Input Voltage	198-264V	
	Rated Input Voltage(V)	220-240V	
	Frequency	50/60Hz	
	Input Current	0.28A	0.34A
	Rated Input Current	0.28A	0.3A
	Power Factor	>0.95	
	THD	<10% @220-240V	<10% @220-240V
	Efficiency	91%	92%
No load wattage	not permitted	<0.25W	
Protection	Short circuit protection	Pass	
	Over voltage protection	Pass	
	Over temperature protection	Pass	
Safety & EMC	Withstand voltage	I/P-O/P:3.75KVac, <5mA 60S; I/P-FG:1.6KVac, <5mA 60S; O/P-FG:0.5KVac, <5mA 60S	I/P-FG-1.6KV <5mA 60S
	Isolation Resistance	I/P-O/P: 500VDC, ≥100M Ω	
	Inrush Current	IEC/EN61000-4-5 (P≥25w L-N:1KV, L/N-PE:2KV) IEC/EN61000-4-5 (P≥25w L-N:1KV, L/N-PE:2KV)	
	EMC Emission	EN55015, EN61000-3-2	
EMC Immunity	EN61000-4-2,3,4,5,6,8,11; EN61547		

## Installation Procedure

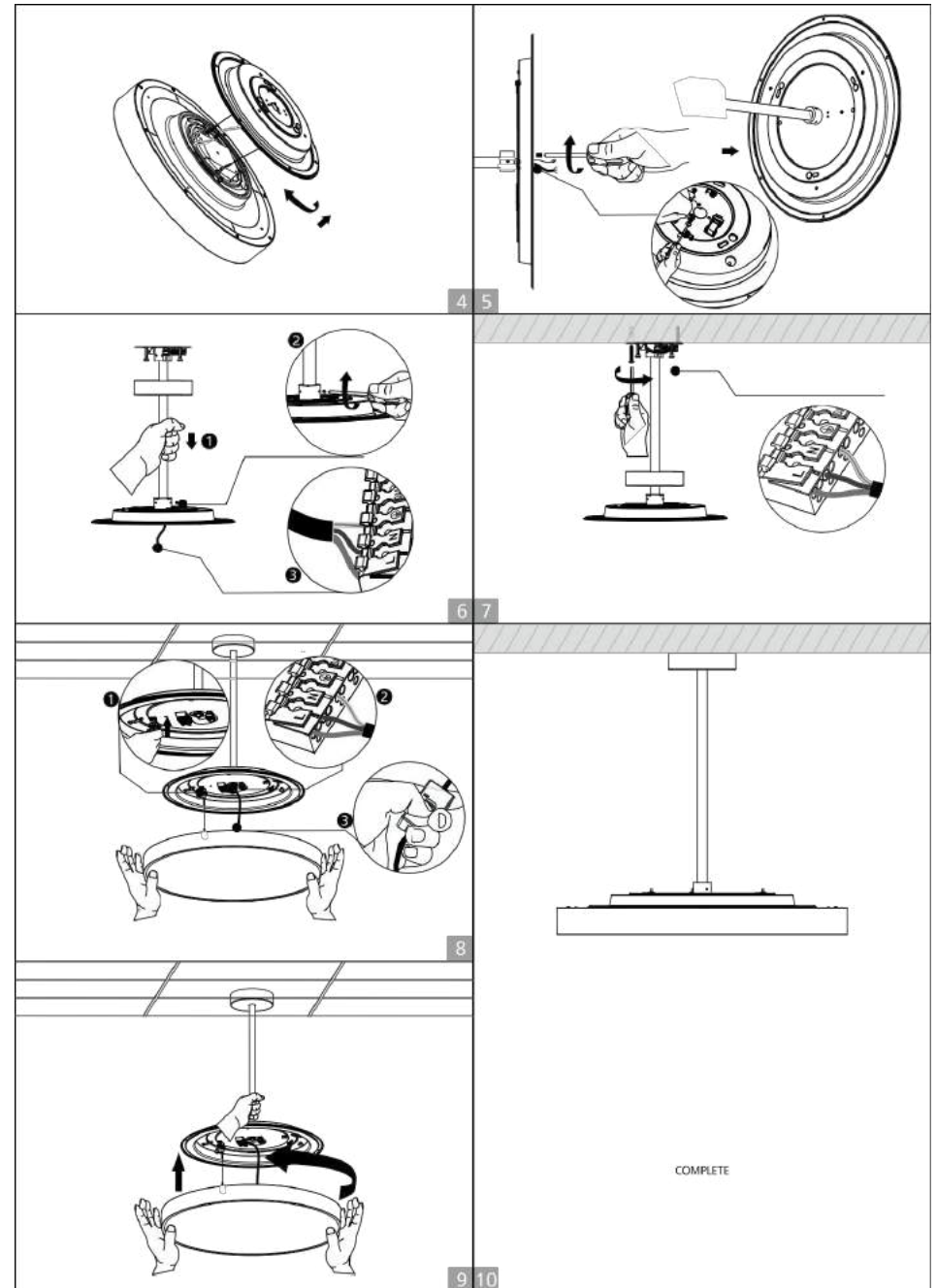
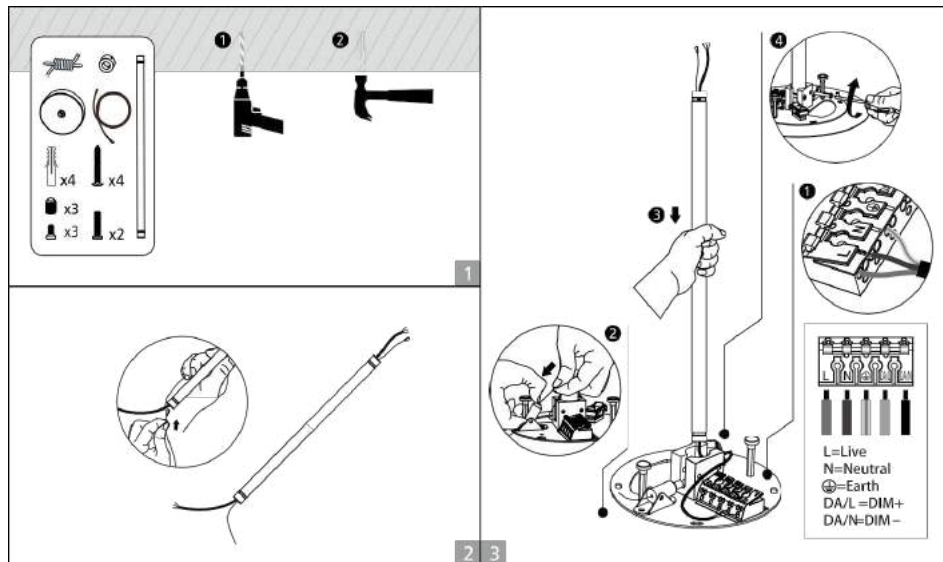
### WARNING

1. Switch off before installation / maintenance.
2. Switch on only after complete installation and examination of the circuit.
3. Professional electrician for installation and maintenance only.

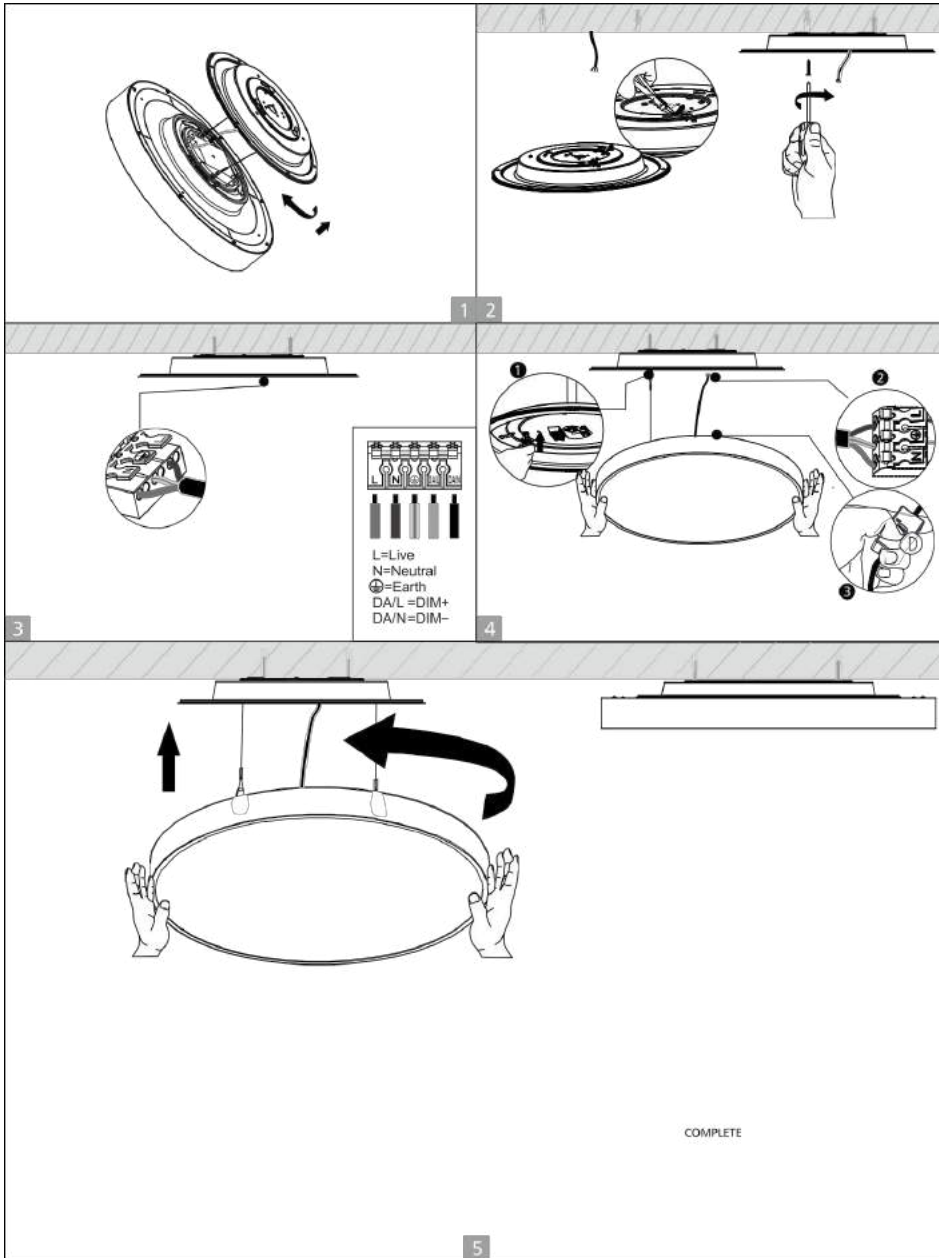
Turn Off power supply before starting any installation. Read instructions & check you have all the tools & accessories to complete the installation correctly.



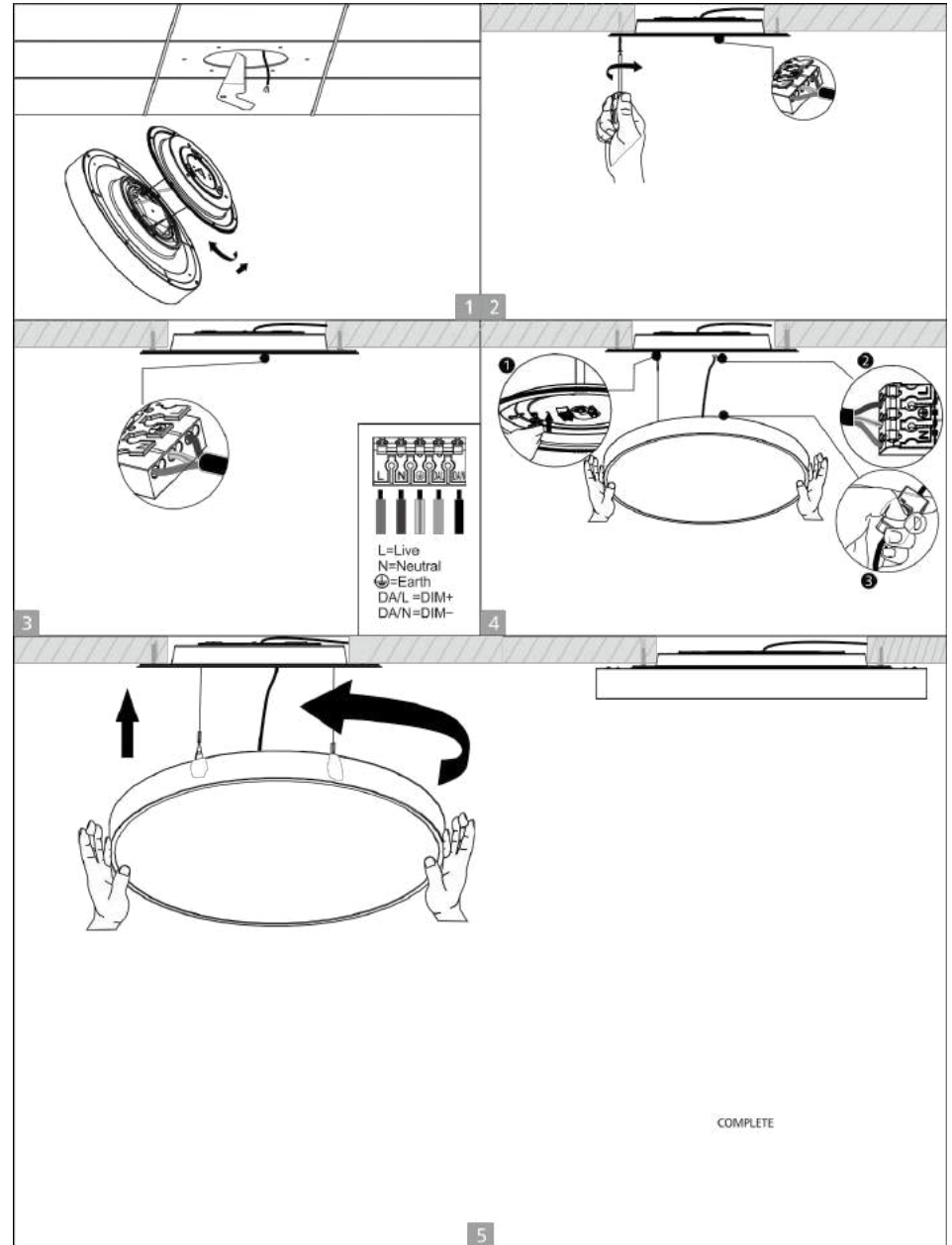
### With pendant rod suspension installation



### Surface Mount installation

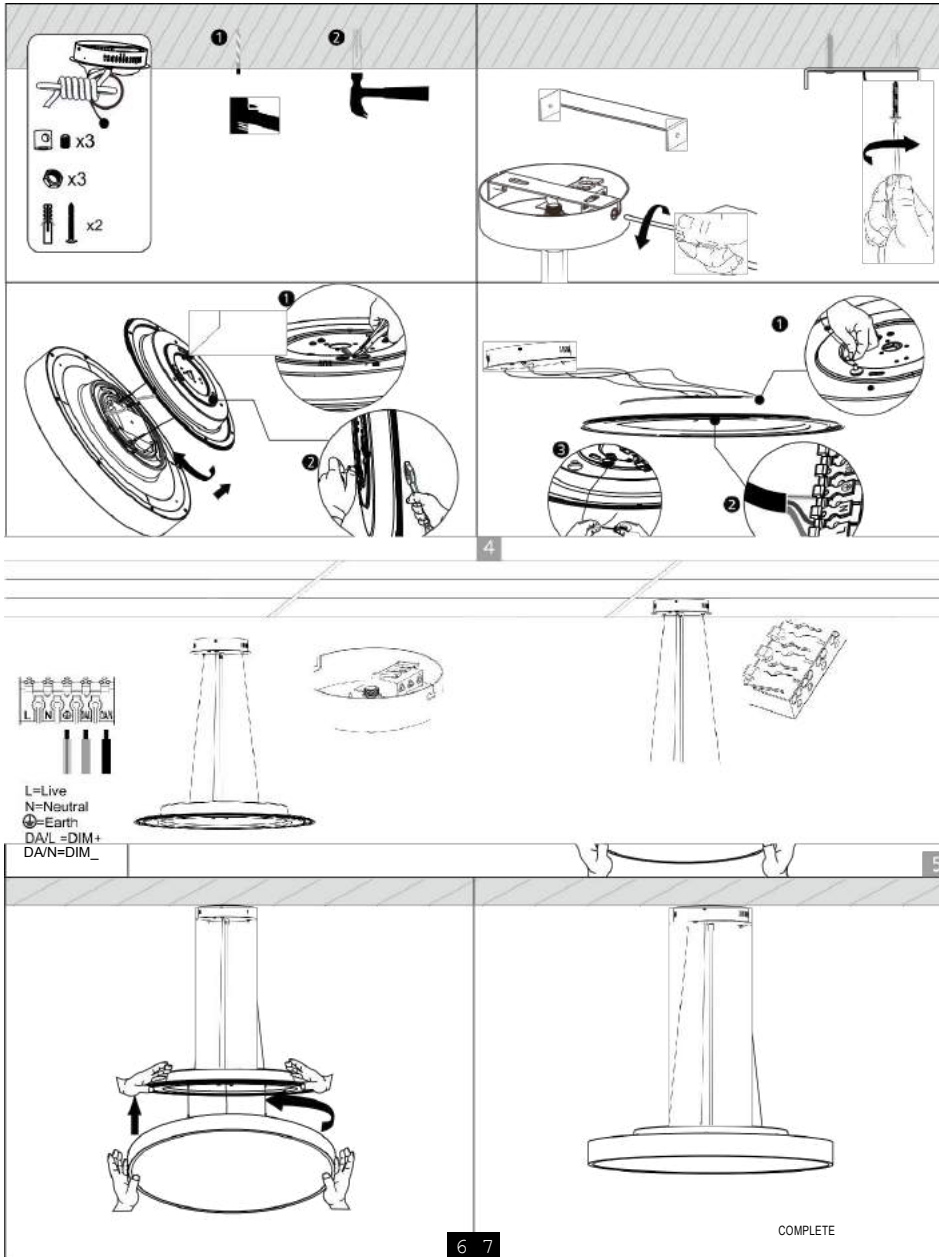


### Recessed installation





With steel wire suspension installation



With wire harness suspension installation

